

File-Eze®

EDTA Chelating & Filing Lubricant



Description & Indications: File-Eze® is a 19% EDTA dentin chelating agent in an aqueous, water-soluble solution with a lubricating base.

Indications: Use File-Eze to aid in instrumentation and debriement of root canals.

Procedure:

Preliminary Steps:

A. IndiSpense® system delivery:

1. The pre-labeled unit dose File-Eze syringe is attached to the end of the large, no-waste IndiSpense syringe by turning the Luer Lock of the unit dose syringe snugly onto the male thread of the IndiSpense.

2. Depress plunger of IndiSpense syringe with palm of hand while stabilizing the unit dose syringe at the plunger with the non-dominant hand. Slightly pull on plunger of unit dose syringe to facilitate loading. Do not express contents of unit dose syringe back into IndiSpense syringe. To prevent cross-contamination, a used syringe should not be reattached to the IndiSpense syringe.

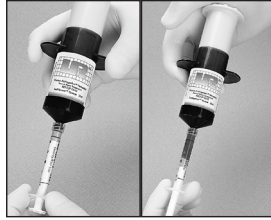
3. Place cap on unit dose syringe if not using immediately, or attach a Mini tip and cover with Ultradent's TipSoc® covers.

4. When ready for use, continue with procedure steps 1-4.

B. Preloaded 1.2ml syringe delivery:

1. Remove Luer Lock cap from the syringe.

2. Twist a NaviTip® firmly onto the syringe. For optimal control, hold syringe with plunger in palm of hand, instead of in conventional manner with thumb on plunger.



Figs. 1&2 A 1.2ml unit dose syringe is twisted firmly onto the IndiSpense syringe. While supporting plunger of unit dose syringe with the non-dominant hand, depress plunger of IndiSpense and fill unit dose syringe to desired level.

Procedure:

1. The NaviTip® can be used to deliver File-Eze directly into the canal opening, as shown in Fig. 3. When the canal is difficult to find, start by placing point of file into canal opening prior to introducing File-Eze to pulp chamber (or onto file.) Visibility is not impaired.

2. Once canal opening is engaged, express File-Eze through tip into canal to no more than half the working length. As an alternative, a small amount of File-Eze can be placed directly onto file as seen in Fig. 4.

3. File-Eze is only used with the first two or three instruments. A thorough amount of sodium hypochlorite is used during entire instrumentation and cleansing procedure, alternating with liquid EDTA between each file.

4. File-Eze is irrigated and rinsed from canal, similar to other root canal preparations; ChlorCid® sodium hypochlorite solution is recommended. A slight effervescent cleansing action occurs when ChlorCid contacts residual File-Eze, which helps remove extraneous material from canal.

Precautions:

1. Deliver only to canal orifice. Do not express material with pressure up canal past apical foremen.
2. Tips are disposed after use.
3. Clean and disinfect syringes between patients.
4. NaviTips do not have a side port hole. Do not express past apex.

- EN Filing and Chelating Agent
- DE EDTA-Gel zur Wurzelkanalaufbereitung
- FR Agent Chélatant
- NL Chelaterende gel
- IT Agente Chelante Endodontico
- ES Gel Quelante
- PT Preparação do Canal com Quelante EDTA
- SV Upplösande, Smörjande Dentin Behandlare
- DA Smøre- og chelateringsmiddel
- FI Pehmentävä ja Voiteleva Dentiiniin Käsitteilyaine
- EL Παράγοντας χηλίωσης για τη ριζοσηση
- RU Пломбировочный и 19% EDTA W Zelu do Chemicznego Poszerzenia Kanalu
- TR Egeleme ve selasyon ajani
- ZH 根管治療鈣化組織處理劑

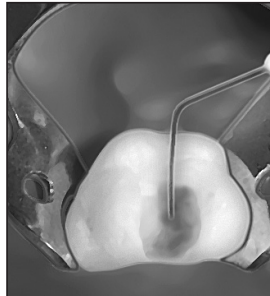


Fig. 3 File-Eze is placed after canal orifice is engaged. Visibility is not impaired.

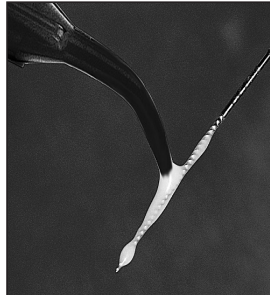
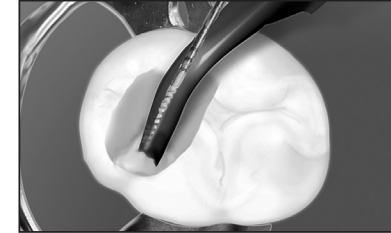
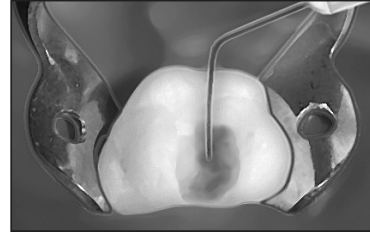


Fig. 4 File-Eze may be applied directly on file if desired.

File-Eze®



- EN Place File-Eze into canal from bottom up. Following instrumentation, irrigate with sodium hypochlorite.
- DE Den Wurzelkanal von unten her mit File-Eze füllen. Nach der instrumentellen Aufbereitung mit Natriumhypochlorit spülen.
- FR Placer le File-Eze de bas en haut dans le canal. Après alésage, irriguer avec de l'hypochlorite de sodium.
- NL Breng vanaf de bodem File-Eze aan in het kanaal. Na instrumentatie spoelen met natriumhypochloriet.
- IT Inserire File-Eze nel canale procedendo dal fondo verso l'alto. Dopo la strumentazione, irrigare con ipoclorito di sodio.
- ES Coloque File-Eze en el canal llenando de abajo hacia arriba. Irrigue el canal con hipoclorito de sodio.
- PT Encher com File-Eze o canal radicular de baixo para cima. Iniciar a instrumentação, irrigar com hipoclorito de sódio.
- SV Applicera File-Eze i kanalen, efter instrumentering, spola med natrium hypoklorid.
- DA Fyld File-Eze i rodkanalen fra bunden. Efter instrumenteringen skylles med natriumhypoklorit.
- FI Vie File-Eze kanavaan. Huuhtelee natriumhypokloridiilla instrumentoinnin jälkeen.

- EL Γεμίστε τον ριζικό σωλήνα με File-Eze. Μετά τη ριζοσηση ξεπλύνετε με διάλυμα Υποχλωριώδους Νατρίου.
- RU В ведите File-Eze в канал снизу вверх. После работы инструментами оросите гипохлоридом натрия.
- PL Umieścić File-Eze w kanale od szczytu kanał do ujścia. Opraczuwać kanał przepłukując go podchlorynem sodu.
- TR File-Eze'yi kanala apikalden kronale doğru uygulayınız. Egelemeyi takiben, sodyum hipoklorit ile irrigasyon yapınız.

- KO Canal에 "File-Eze" 를 주입한 후, 소독합니다.
- ZH 自根管底部開始置入File-Eze，然後進行一般的根管治療動作，同時並用次氯酸鈉沖洗

- TH ฉีดเข้าไปในคลองราก ขยายด้วยไฟล์ ถ้างอกด้วยโซเดียมไฮโปคลอไรด์

- EN Alternative: Place directly on file and canal orifice.
- DE Alternativ: File-Eze direkt auf die Wurzelkanal-Feile und den Wurzelkanaleingang bringen.
- FR Alternative: Placer directement sur la lime ou au niveau de l'entrée canalaira.
- NL Alternatief: breng direct op de vijl in de kanaalopening aan.
- IT Tecnica alternativa: Applicare File-Eze direttamente sulla lima endodontica e nell'orifizio canalare.
- ES Alternativa: Aplique File-Eze directamente en la lima y en el orificio del canal.
- PT Alternativa: Aplicar directamente na lima e no orificio do canal.
- SV Alternativt: Applicera på fil och rotkanalsöppning.
- DA Alternativ: Anbring File-Eze direkte på rodfilen og i kanalindgangen.
- FI Vaihtoehto: Vie juurikanavaneulaan ja kanavan suuhun.

- EL Εναλλακτικά: Τοποθετείστε τον επάνω στο ριζικό σωλήνα και στο στόμιο του ριζικού σωλήνα.
- RU Вариант: Поместите непосредственно на инструмент и в отверстие канала.
- PL Można też nanieść preparat bezpośrednio na narzędzie kanałowe i ujście kanału.
- TR Alternatif: Direkt olarak egeye ve kanal ağzına yerleştiriniz.

- [선택] KO "File-Eze"를 file에 직접 묻혀 근관이나 canal orifice에 삽입합니다.

- ZH 也可直接置於根管銼上或是根管開口處

- TH หรือฉีดลงบนคลองรากพร้อมกับไฟล์

